

LINCOLN ROWING CENTRE LINCOLN HEAD 15 MARCH 2026

Travel & Parking Arrangements

Please note that Titanic Bridge next to the Boathouse remains CLOSED. All Head related activity, including boat launch and recovery, will be conducted on the North bank adjacent to Lincoln Rowing Centre Boathouse. As car parking is therefore limited, please park cars in the local car parks, Fig 3. Do not park cars in the allocated trailer parking areas.

Access to the **LINCOLN** landing stage is on the North side of the river via Waterside North. See Fig 1.

Fig 1 – Access road to trailer park – use Waterside North for Lincoln RC



Lincoln landing stage. Trailers should be parked parallel to the riverbank on the river side of the road east of the Boathouse, as directed by the parking marshals. See Fig 2 below.

All towing vehicles and private cars should be parked in one of the local car parks shown in Fig 3 below not in allocated trailer parking area. Please ensure sufficient space for safe boat handling.

Sat Nav

For Sat Nav purposes, the intersection of Waterside North with either Spa Road (if recognised) or Broadgate may be useful or Bifrang Engineering which is past the rowing club postcode LN2 5TB; NOTE it is only possible to turn onto Waterside North when travelling SOUTH down Wragby Road / Broadgate.

Lincoln Rowing Centre SK 98592 71030 LN2 5TB [///line.scuba.expect](http://line.scuba.expect)

From the North or A46 from Newark or A15 from south

If unsure of navigation to Lincoln RC, drivers of vehicles with trailers are recommended to follow the Lincoln northern/eastern bypass around to the east of Lincoln to the junction with the A158 then turn west towards Lincoln signposted St Giles at the roundabout. Drive towards the cathedral straight along Bunkers Hill and Wragby Road then follow Wragby Road LEFT and follow this for about $\frac{3}{4}$ mile down the hill as it becomes Broadgate.

For the **LINCOLN** landing stage, turn sharp left into Waterside North just before the Witham Bridge (British Legion on this corner).

Waterside North then runs parallel with the River Witham until Stamp End Lock, you will then pass under the Railway Bridge and the **LINCOLN** Boathouse is just ahead. The roads are narrow. Please take care.

Please follow the instructions of the parking marshals who will direct you to a suitable space. Lincoln Rowing Centre, the site owners, or their agents, cannot be held responsible for any losses or damages whilst using the car parks.

At previous events held at Lincoln, local companies have complained about visitors using the verge as a toilet; please ensure all your members use the toilet facilities provided.

Fig 2 Trailer park plan

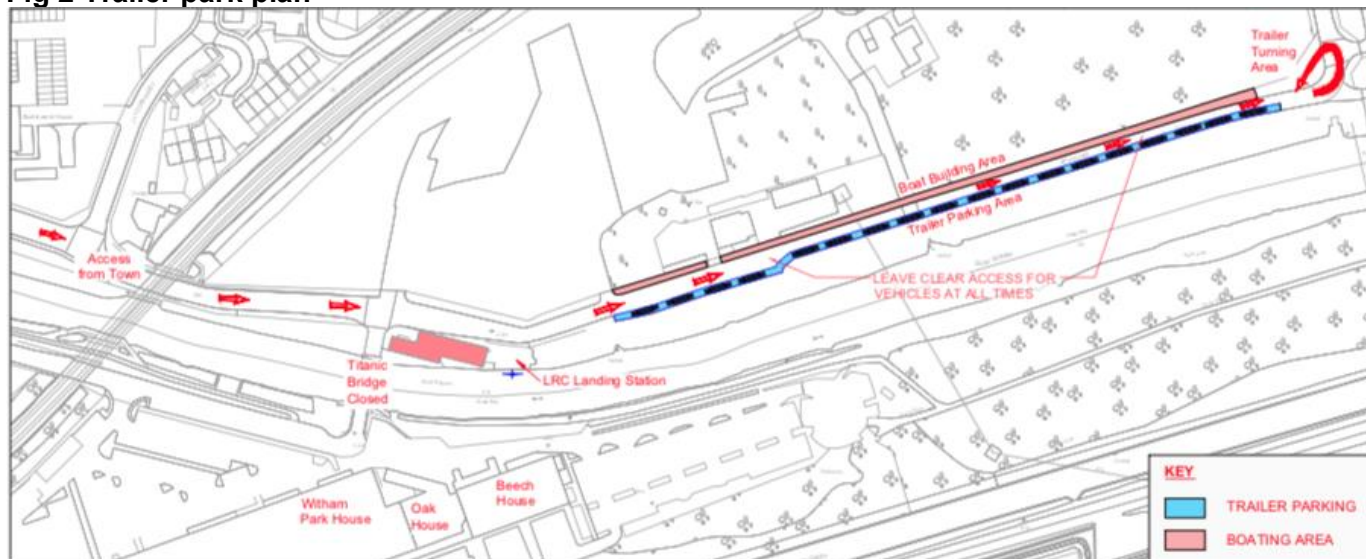


Fig 3 – Local car parks

