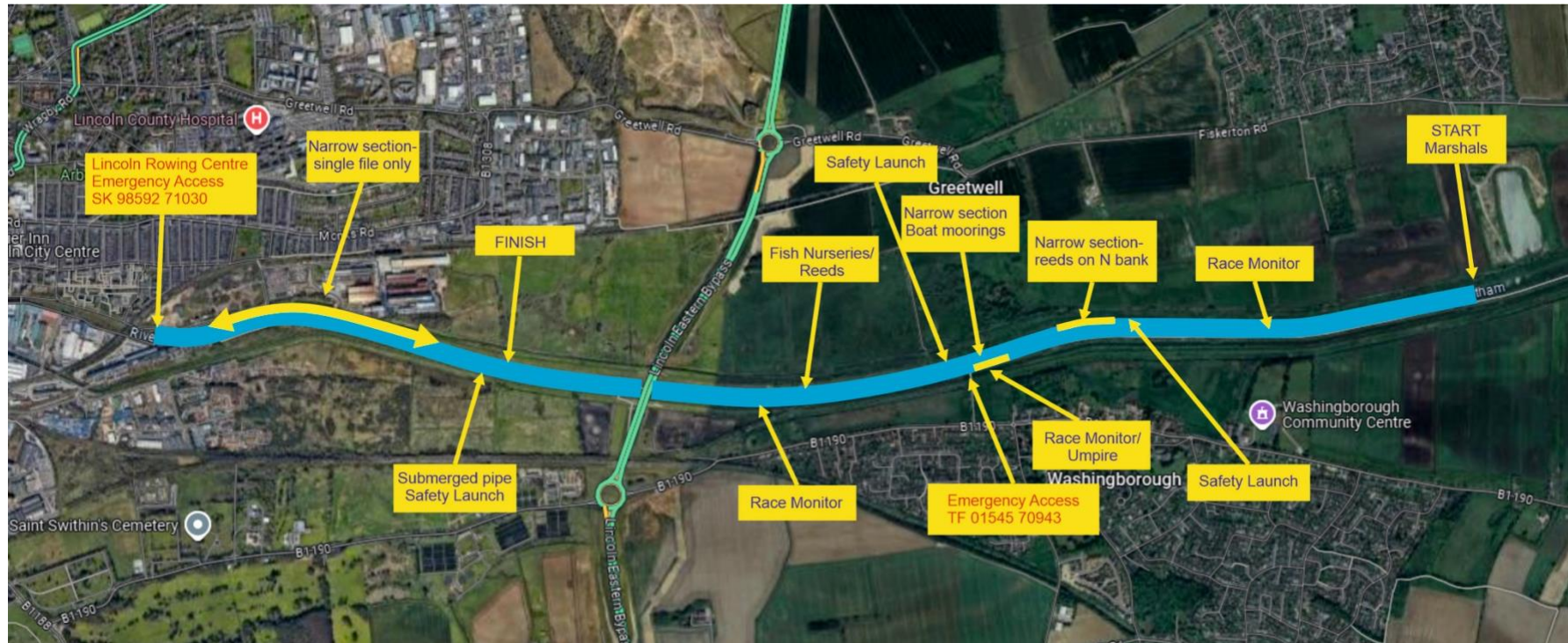


Lincoln Head 2026 Maps and schematics

Fig 1 Satellite Photo of course showing Emergency Access Points, Safety Launch Positions, Hazards and Officials.



The diagram illustrates the rules for overtaking during a regatta start. It shows two parallel lanes separated by a dashed line, representing the starting area. The left lane is labeled "To Start" and the right lane is labeled "To Finish - LRG". A blue arrow points from the left lane towards the right lane, indicating the direction of travel. A green arrow points from the right lane towards the left lane, indicating the direction of travel. A red double-headed arrow indicates the distance between the lanes is approximately 50m. A green icon of a person standing at the start line is labeled "Start Unspire 400'". A blue icon of a person standing at the start line is labeled "Start Timer".

Crews proceed to the start along South Bank, Starboard or Bowside of river

To Start

Approx 50m

To Finish - LRG

Start Unspire 400'

Start Timer

Rules for Overtaking

To Finish - LRG

← Slower Crew

Faster Crew →

To Finish

North

South

Slower crews must give way to faster crews by moving towards starboard/bowside this is the north bank/clubhouse side of the river